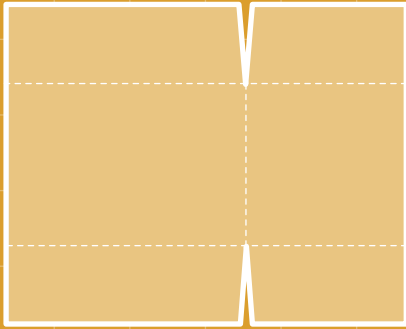
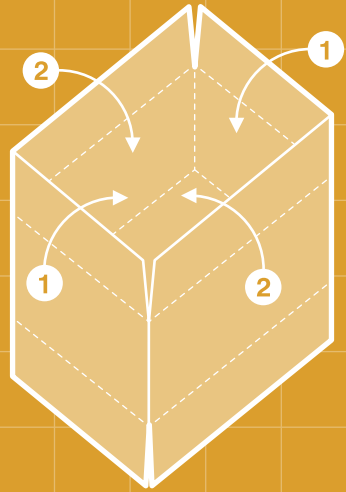


# HOW TO PACK A BOX



## STEP 1

Packing boxes will arrive flat



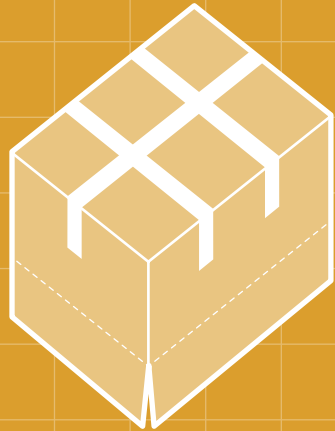
## STEP 2

- 1 Fold in small flaps
- 2 Fold in large flaps



## STEP 3

Tape down centre join, overlapping ends by approximately 6 inches



## STEP 4

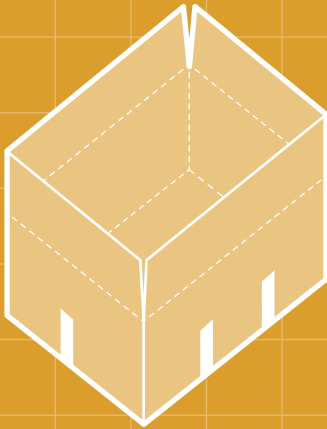
Two strips of tape in the opposite direction



MemNo: H096

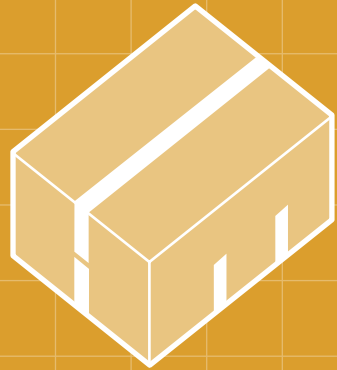


home2home  
moves



### STEP 5

Fill box with appropriate items  
Do not over or under fill box



### STEP 6

Seal with one strip of tape  
down the centre and write  
on tape where it is to go  
at the new property



## RETURNING BOXES

Cut through tape with knife or blade  
and flat pack box. Store in a dry  
place and contact us on 01273  
580444 to arrange collection.

## PACKING EXAMPLES

Small box

Books, CD's

Medium box

Crockery, china, ornaments, glasses, food

Large box

Clothes, bedding, towels, pots and pans



MemNo: H096



Working in partnership for consumer protection



Raising standards in the removals industry

home2home  
moves